

Symantec Backup Exec™ 10d for Windows Servers

DESIGNED FOR DISK

Symantec Backup Exec™ 10d for Windows Servers is the industry leading Windows data protection solution designed for disk, providing comprehensive, cost-effective, and certified backup and recovery – now including true continuous data protection. Backup Exec 10d revolutionizes data protection by eliminating backup windows and introducing the industry's first web-based file retrieval. Centralized administration provides scalable management of distributed backup and remote servers. An intuitive interface and wizards simplify data protection and recovery procedures for any level user and any size network. With a complete family of high performance agents and options to protect Windows, Linux, and UNIX server data, as well as desktops and laptops, Backup Exec offers simple, flexible, and granular data protection.

IT administrators require a reliable, easy to use, data protection solution that is cost effective and simple enough for the novice user to install and administer, yet flexible to protect large Windows environments, departmental workgroups, remote office environments and critical data on desktops and laptops. It must be scalable enough to grow from a single server into a multi-server storage area network (SAN). The ideal solution must back up more data with less hardware, in less time, with fewer resources, and be managed centrally.

COMPLETE PROTECTION: JUST ADD DATA

Backup Exec 10d offers a complete data protection solution in one product suite from one vendor removing doubt and complexity when dealing with protecting your company's most valuable asset – DATA. Leveraging advanced Windows system protection technologies that include a comprehensive strategy utilizing both disk and tape media to provide you with industry leading disk to disk to tape performance and data availability.

Centralized administration provides scalable management of distributed backup and remote servers. An intuitive interface and wizards simplify data protection and recovery procedures for any level user and any size network. Sophisticated database and groupware agents provide on-line protection and granular recovery. Even entry level system recovery is integrated into the Backup Exec solution. Backup Exec 10d delivers comprehensive disk and tape based solution from a single vendor. One solution – One vendor, Just add DATA.

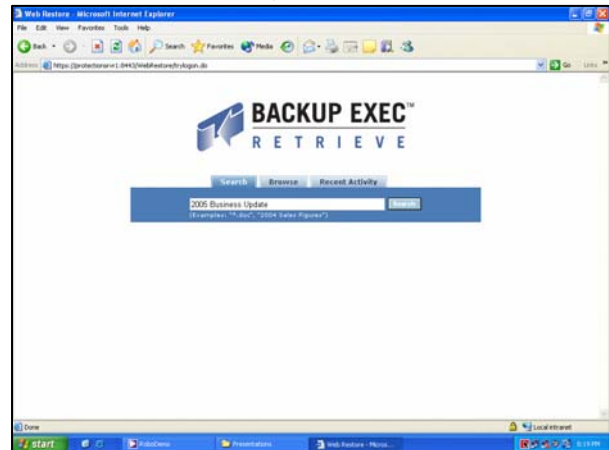
KEY BENEFITS

- Eliminates Backup Windows
- Enables faster backups and restores
- Improved reliability
- Delivers Industry's First Web-Based File Retrieval using a standard web browser
- Complete disk-based and tape-based data protection
- Reduces operational cost in Microsoft Windows environments
- Increases Windows application availability
- Simple, scalable, centralized management
- Provides certified compatibility across Microsoft Windows 2000 and Windows 2003 Servers

INTRODUCING THE BACKUP EXEC CONTINUOUS PROTECTION SERVER

Symantec Backup Exec™ 10d for Windows Servers is designed for disk, delivering more reliable, faster, and more efficient true continuous data protection for Windows servers. Backup Exec 10d revolutionizes data protection by eliminating incremental or differential backup, even backup windows altogether.

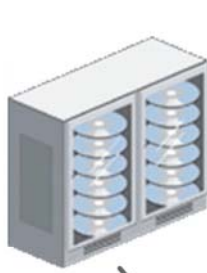
Continuous Protection server introduces the industry's first web-based file retrieval using a standard web browser. IT administrators no longer need to spend time restoring end user data. End user's will immediately be able to securely restore their own server data and when needed IT administrators can restore data through the same web browser interface from any machine in the network.



THE BACKUP EXEC SOLUTION

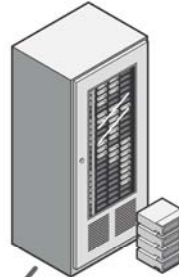
Disk or NAS

Backup to disk, storage arrays, or network attached storage for faster backups and recoveries. Archive to tape for longer term data protection.



Tape Drives or Library

Backup data to tape for long term protection, disaster recovery, or archival purposes.



DESIGNED FOR WINDOWS

Protecting business critical data on servers, as well as desktops and laptops, Backup Exec 10d for Windows Servers is designed to meet the needs of today's Windows-based businesses. Backup Exec can protect a single server or department, as well as scale to meet the needs of large, distributed organizations.

CERTIFIED FOR WINDOWS

Proven, innovative architecture fully incorporates Microsoft's design standards helping to ensure 100% compatibility with Microsoft's Windows Server operating systems. Backup Exec supports traditional tape-based backup, as well as disk-based data protection to deliver maximum performance and reliability.

Backup Exec Media Server Backup Exec Continuous Protection Server



Application Servers (Local or Remote)

Protect business critical application and database servers like Exchange, SQL, Oracle, SAP, or Lotus. Backup Exec offers a line of high performance agents that help ensure data is protected while improving application availability.



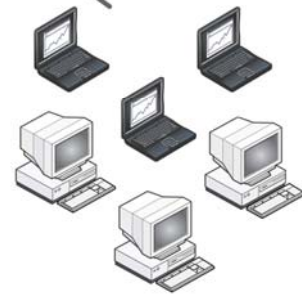
File Servers (Local or Remote)

Protect business critical data on file servers, web servers or network shares, including open files. Or continuously protect these servers, reduce administration costs by letting users restore their own files *without* contacting IT.



Desktops & Laptops (Local or Remote)

Protect the more than 60% of business critical information outside the datacenter and not on corporate servers. Enable continuous data protection, and let user restore their own workstation files *without* contacting IT.



Please refer to the Backup Exec 10d for Windows Servers Agents and Options datasheet for a complete list of agents and options that protect business critical information and improve overall management and performance.

PRODUCT HIGHLIGHTS

NEW! Continuous Protection Server and Agent -

Providing continuous true disk-based data protection for Windows file servers, whether local or in remote offices.

NEW! Agent for Microsoft Data Protection Manager-

provides high performance network-wide data protection for the Microsoft Data Protection Manager, including all embedded SQL Server components.

Multi-Staged Disk Backups – Improves manageability of disk-based backups before moving them onto tape, supporting automatic disk-to-disk-to-tape backup and restore strategies.

Windows Storage Server 2003 Support – Transforms Microsoft Storage Server 2003 NAS appliances into a complete storage solution. Easily manage backups using the industry's only solution that integrates into the Storage Server 2003 web management console

Support for Microsoft Volume Shadow Copy Service (VSS) – Integrates with Microsoft's VSS writers to ease the protection and recovery of SQL Servers, Exchange Servers and SharePoint Team Services.

Advanced Disk-Based Backup Option (ADBO) – Through advanced disk-based capabilities, including Synthetic and Off-Host backups, ADBO performs near zero impact backups and fast restores.

Desktop and Laptop Protection – Provides continuous disk-based protection for users that are in the office or on the road. Automatically copy user data to existing network shares or storage, enabling quick recovery of data by the administrator or the user.

Fast Backup and Recovery for Exchange and Exchange Server 2003 – Reduces backup and restores with Single Instance Storage of message attachments, incremental/differential mailbox backups and individual public folder restore provide granularity and deliver faster backup and recovery of Exchange Servers. Features integrated snapshot protection with consistency check leveraging Microsoft VSS technology to provide on-host or off-host backup from consistent snapshot image.

Database protection – Agents for SQL, Oracle and SAP databases offer high availability and non-disruptive backup for mission critical applications.

Central Admin Server Option – Simplifies and centralizes management and monitoring of multiple Backup Exec servers across a distributed network or in remote offices.

Intelligent Disaster Recovery – Entry level solution that saves time by eliminating the need to first reload the entire operating system of crashed servers. Protection is now available for remote, LAN-based computers that use Intel 64-bit extended and 64-bit Itanium processors.

Remote Agent for Linux/UNIX Servers – Provides high performance network-wide data protection for 32 and 64-bit remote Linux and UNIX servers.

Microsoft SharePoint Portal Server Agent – Safeguards a SharePoint Portal Server with online, fast and reliable data protection and granular recovery – including server farms.

RELIABLE

Backup Exec's proven, innovative architecture fully incorporates Microsoft's design standards helping to ensure 100% compatibility with Microsoft's Windows Server operating systems. Backup Exec software is Microsoft certified for both Windows Server 2003 and Windows 2000.

Backup Exec includes tools, such as Job Test Run to identify potential problems that cause job failures, and then notify the administrator so that corrective action can be taken. Realize further benefits by using Automatic Discovery of new resources to enable administrators to create a job for detecting new, unprotected resources that are at risk and in need of backup.

Self-Healing

Set a threshold at which Backup Exec fails the jobs that were stalled and then recovers them using customizable error-handling rules which specify the number of times that stalled/failed/recovered jobs are retried, and the interval between the retries.

Other reliability features include Cyclical Redundancy Check (CRC), Data Verify and Database Consistency Checking that assists in maintaining data integrity with high-speed verification.

MAXIMUM PERFORMANCE

The Backup Exec software architecture is designed to minimize network traffic and maximize throughput performance. The optional Remote Agents for Windows*, NetWare* , Linux* , and UNIX* servers use Symantec's exclusive Agent Accelerator technology for distributed processing and source compression providing client access when protecting or restoring remote file and database servers.

Performance features of Backup Exec software include the ability to: Leverage high performance network backup of all Windows server platforms, including 64-bit remote systems.

Leverage Windows Change Journal integration and use the Windows modified time instead of relying on the archive bit – allowing incremental and differential backups to run faster by eliminating the need to perform larger, full backups.

Reduce LAN traffic, and enhance backup and recovery performance by selecting a Network Interface Card to reroute backup and restores to a secondary network.

For additional information about Symantec, its products, or the location of an office near you, please call our world headquarters or visit our Web site at www.symantec.com.

Symantec Corporation

World Headquarters
20330 Stevens Creek Blvd
Cupertino, CA 95014
+1 408 517 8000 or 1 866-837-4827

FEATURES	BENEFITS
Windows Compatibility	
Support for Microsoft Windows Servers, including System State and Shadow Copy components	Microsoft certified support for Windows Server 2003 and Windows 2000 helps reduce costs, deployment time and ensure compatibility and reliability, protecting all system configuration information including Active Directory of local or remote servers and workstations.
Full Windows File System Support	Windows 2000 and or Windows Server 2003 File System Support for FAT 16/32, VFAT, NTFS, CDFS, and UDF including Macintosh and POSIX file systems delivers maximum flexibility for diverse client support.
Cluster Configuration Wizard	Eases installation and configuration of Backup Exec or applications in a Microsoft Cluster Server (MSCS) environment and provides automatic cascading failover for up to 8-node clusters.
Microsoft Tape Format Read/Write	Allows the interchange of media with the Windows Server backup applet.
Microsoft Operations Manager Support	The Microsoft Operations Manager management pack proactively monitors and manages Backup Exec server alerts.
Flexibility & Ease of Use	
Graphical User Interface / Administration Console	Provides a simple, intuitive browser-like console for ease of use, allowing customization of the columns, layout and type of information to be displayed.
Central Admin Server Option	Centralizes management and monitoring of multiple Backup Exec servers across a distributed network or in remote offices, centralizing administration, job processing, and load balancing.
Policies	Provide a simple, logical method for managing backup jobs and strategies. Policies contain job templates, whose job attributes define how and when backup jobs are processed.
Disk to Disk to Tape	Continuous Data Protection and automated Multi-Staging enables administrators to automatically copy data to disk and archive to tape for true disaster recovery per predefined retention periods.
Desktop and Laptop Option	Simplifies desktop and laptop data protection with simplified deployment and support for Outlook 2003.
Support for Remote 64-bit Windows Systems	Provides high performance network backup of Intel 64-bit remote systems.
Support for Exchange Server	Leverages Microsoft Exchange Server 2003 Volume Snapshot (VSS) technology enabling users to select either the VERITAS or the Microsoft proprietary snapshot technology for protecting open files.
Support for SQL Servers	Delivers fast, dependable method for complete SQL Server protection on 32 or 64-bit servers.
Support for Microsoft Storage Server 2003	Transforms Microsoft Storage Server 2003 NAS appliances into a complete storage solution by integrating into the Microsoft web administration console.
Support for Oracle	Provides non-disruptive data protection for business-critical Oracle databases
Task Wizards	Simplifies installation, setup, backup, recovery, media management, disaster preparation, cluster installation and agent configuration.
Backup via Specified Backup Network using Secondary NIC	Helps reduces LAN traffic by isolating backup and restore operations to a sub-network.
One-Button Backup	Speeds execution of a complete local system backup without having to define a backup job.
Outlook-style Calendar Based Job Scheduler	Simplifies job scheduling and management of backup operations.
Environment Check	Improves installations with new utility that runs before Backup Exec is installed and checks if the media server has the proper system environment (operating system version, service packs, etc.) and checks 3rd party application versions.
Job Retry	Automatically retries a failed job and reroutes jobs to alternate drives.
Automated Alert Notification and SNMP Support	Framework console notification via Microsoft Exchange, Lotus Notes or SMTP e-mail, pager, printer, net send broadcast, and network monitoring applications.
Cyclical Redundancy Check	Helps to ensure reliability with high-speed data verification.
Remote Agent for Linux and UNIX servers	Provides high performance network-wide data protection for 32 and 64-bit remote Linux and UNIX servers.
Advanced Device and Media Management	
Advanced Disk-based Backup Option	Now offers fastest disk-based recovery, with Synthetic and Off-Host backups to perform zero impact backups and fast restores
Device Pooling, Cascading and Dynamic Load Balancing	Maximizes backup/restore performance and facilitates job failover.
Automated Media Management	Enables easy set-up of media formatting, labeling, tracking, rotation, defining of retention periods and catalog viewing.
Automated Log Files and Disk/Catalog Grooming	Frees hard disk space from inactive files.
Autoloader/Library Slot Partitioning	Allows backup jobs to be targeted to specific slots within a tape autoloader or library; mix drive types within a tape library.
System Summary Screen	Provides administrators with a central, consolidated view of the Backup Exec server status simplifying job management.
VERITAS Update	Checks the Symantec website at user specified intervals for any available Backup Exec updates informing the user of the latest patches or hot fixes available.